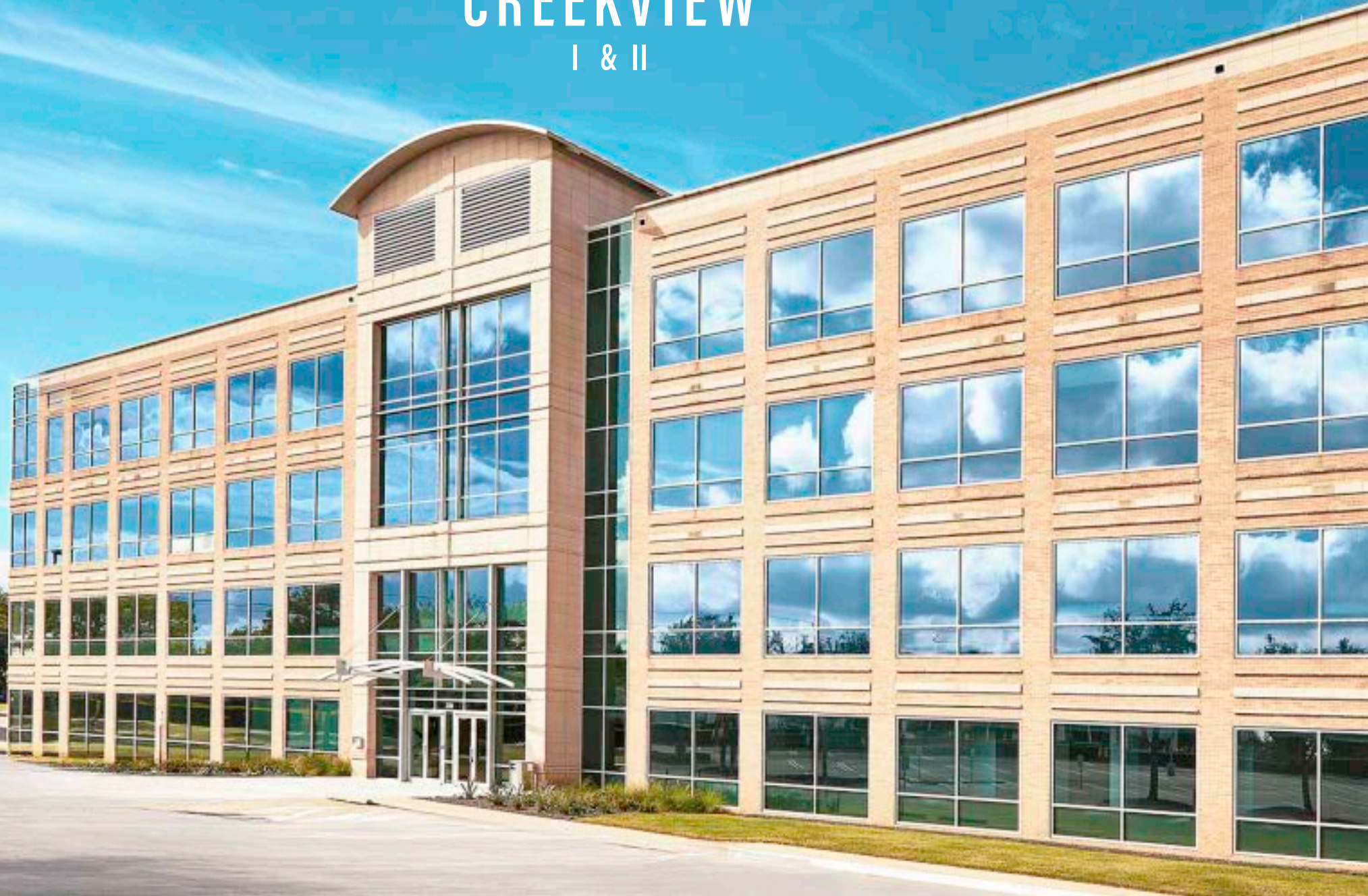




# CREEKVIEW

I & II



# UNLOCK THE POTENTIAL

Welcome to Creekview I & II at Richardson, where innovation meets sophistication in the heart of Richardson, TX. The newly renovated space is designed to inspire success and redefine your workspace experience.



## ELEVATED DESIGN

Our meticulously renovated spaces boast contemporary designs, upscale finishes, and an ambiance that reflects professionalism at its finest. Elevate your business image in an environment that exudes sophistication.



REDEFINING  
**EXCELLENCE** IN  
RICHARDSON

**CREEKVIEW I**  
2301 N Greenville Ave

- Full building opportunity
- Top of building signage
- 100,871 SF
- 4 Floors
- 26,000 SF flexible floor plates
- Surface parking: 5/1,000 sf
- Covered parking: 1/1,000 sf



**CREEKVIEW II**  
1300 Lookout Dr

- 159,812 SF
- 3 Floors
- 53,000 SF flexible floor plates
- Surface parking: 5/1,000 sf
- Covered parking: 1/1,000 sf

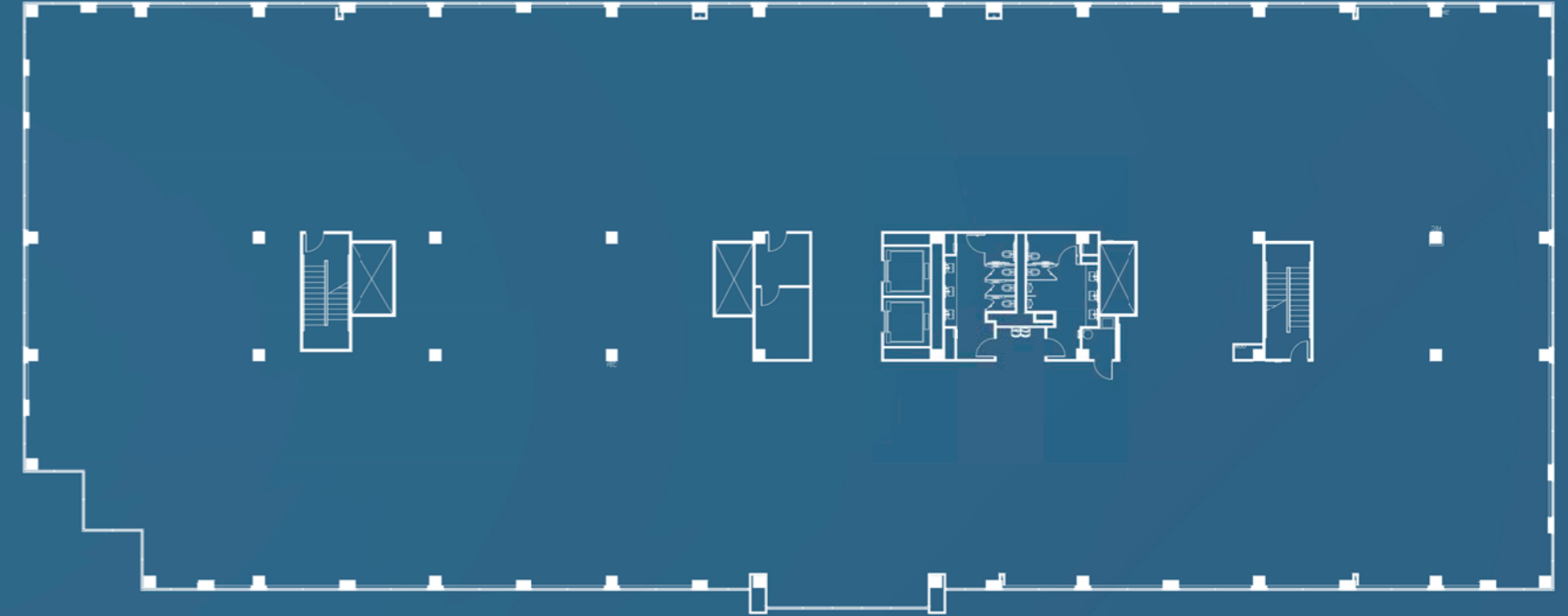




**ADAPTABLE  
FLOOR PLANS**

## CREEKVIEW I — 4TH FLOOR WHITEBOX

26,195 RSF



# AREA AMENITIES

## DINING

- ACE'S SPORTS HANGAR
- BRUNCHEON
- CHAR'D: SOUTHEAST ASIAN KITCHEN
- CHICK-FIL-A
- COOLGREENS
- DANGKI: FUSION
- EDOKO SUSHI & ROBATA
- FERNANDO'S MEXICAN CUISINE
- FISH CITY GRILL
- GOOD UNION URBAN BBQ
- JASPER'S
- LUNA GRILL
- MODERN MARKET
- MURPHY'S DELI
- ONI RAMEN
- PEI WEI ASIAN KITCHEN
- PHO IS FOR LOVERS
- PIADA ITALIAN STREET FOOD
- RED MANGO
- SMASHBURGER
- STARBUCKS (E. RENNER RD.)
- SUPER CHIX
- THE BRASS TAP
- TIFF'S TREATS
- TRICKY FISH
- WHOLE FOODS MARKET
- WILDWOOD
- WXYZ LOUNGE AT ALOFT
- ZALAT PIZZA
- LA BURGER
- FISH SHACK
- GRAND CAFE
- MENA'S TEX-MEX GRILL CANTINA
- URBAN EATZ
- PORTA DI ROMA
- LIBERTY BURGER
- APPOLONIA'S ITALIAN KITCHEN
- JERSEY MIKE'S SUBS
- SILVER FOX

## RETAIL

- AMAZING LASH STUDIO
- CVS PHARMACY
- FEDEX OFFICE PRINT & SHIP CENTER
- URBAN VALUE CORNER STORE
- WELLS FARGO
- WHOLE FOODS MARKET
- TARGET
- KROGERS
- SPECS
- WHOLE FOODS MARKET
- CITYLINE MARKET
- KOHLS
- TOM THUMB

## HOTELS

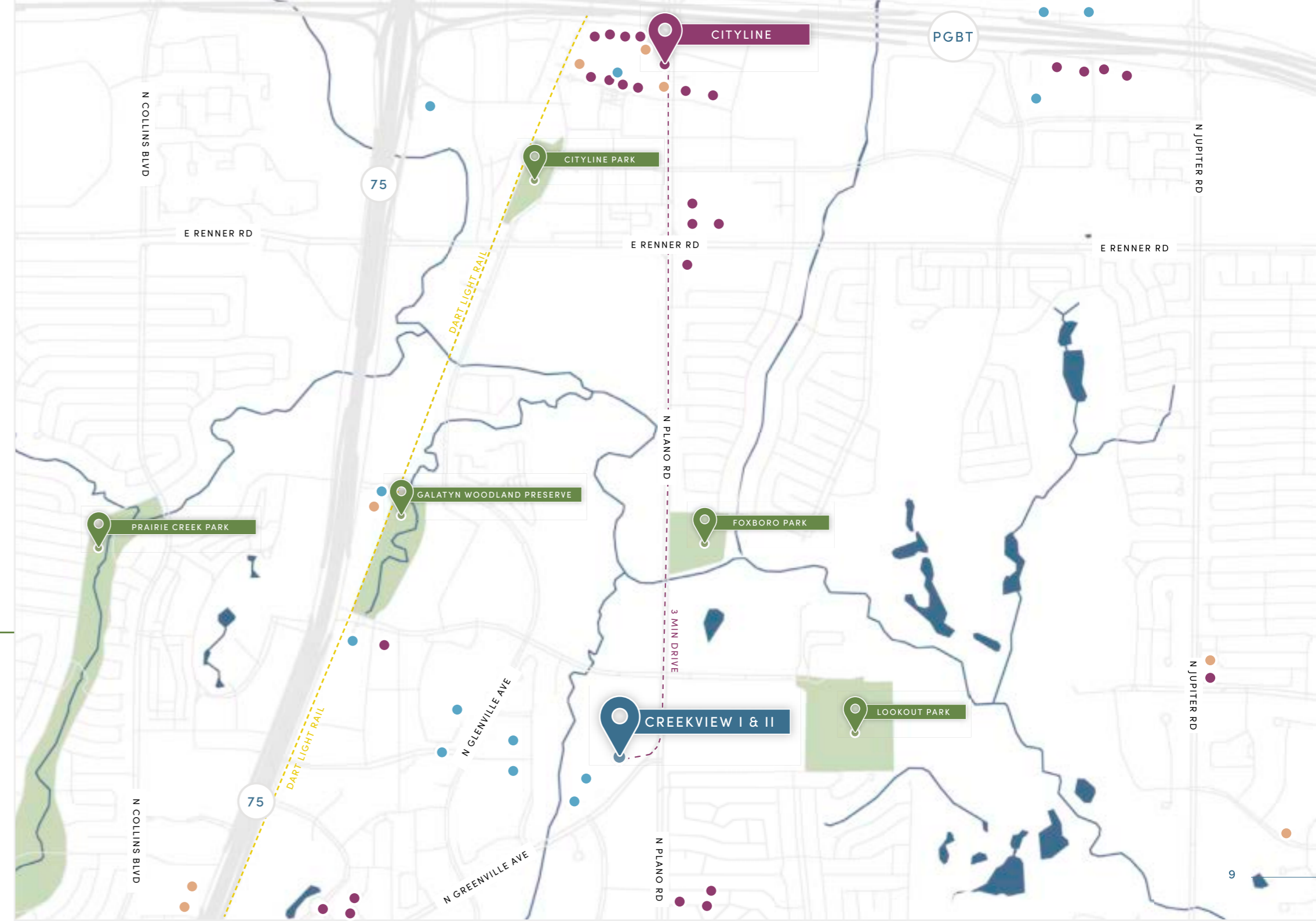
- ALOFT
- HILTON RICHARDSON
- RENAISSANCE RICHARDSON
- SPRINGHILL SUITES
- COURTYARD
- TOWNEPLACE PLAZA
- DOUBLETREE
- HYATT PLACE
- ELEMENT RICHARDSON
- HAMPTON INN
- SONESTA SELECT
- HOLIDAY INN

<5 MILES FROM CREEKVIEW I & II

**50+**  
Dining Options

**30+**  
Retail

**20+**  
Hotels



RENOVATED LOBBY



RENOVATED LOBBY



## GRAB 'N' GO



## NEW TENANT LOUNGE



## FITNESS CENTER



## LOCKER ROOMS





## CONFERENCE FACILITY



## OUTDOOR SEATING





# CREEKVIEW

## I & II

**CHUCK SELLERS**

972.435.0512

[csellers@forgecommercial.com](mailto:csellers@forgecommercial.com)

**TAYLOR LYNCH**

972.435.0514

[tlynch@forgecommercial.com](mailto:tlynch@forgecommercial.com)

**GRANT SUMNER**

972.435.0511

[gsumner@forgecommercial.com](mailto:gsumner@forgecommercial.com)

**DANIEL DEWEESE**

972.435.0516

[ddeweese@forgecommercial.com](mailto:ddeweese@forgecommercial.com)



IEQT | EXETER